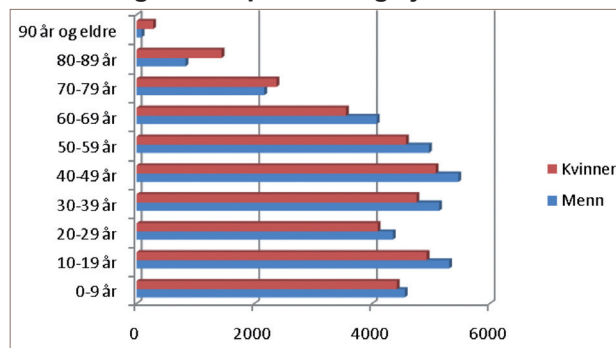
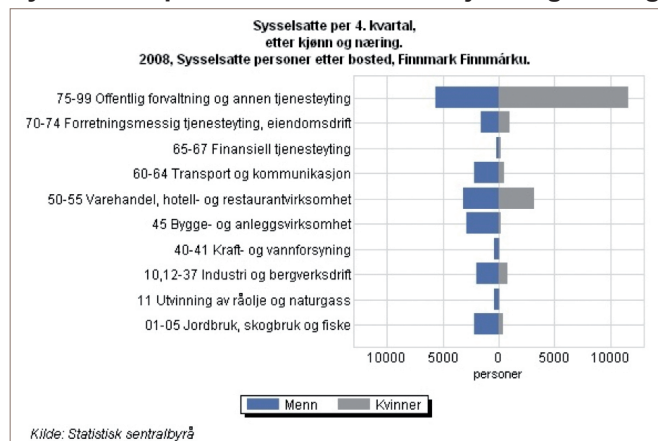


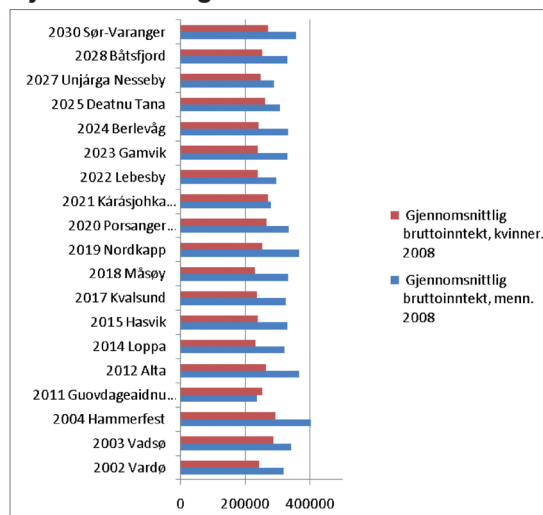
Befolkning fordelt på alder og kjønn



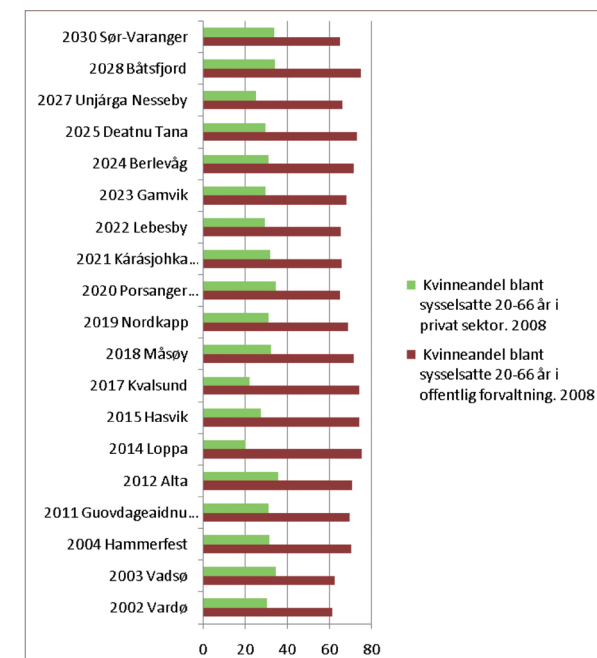
Sysselsatte pr. 4.kvartal 2008 etter kjønn og næring



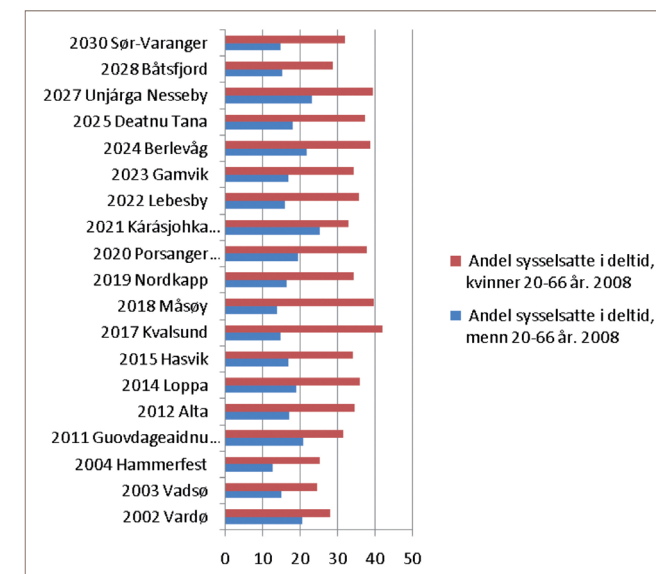
Gjennomsnittlig bruttoinntekt menn/kvinner



Sysselsatte kvinner fordelt på privat/offentlig forvaltning per kommune

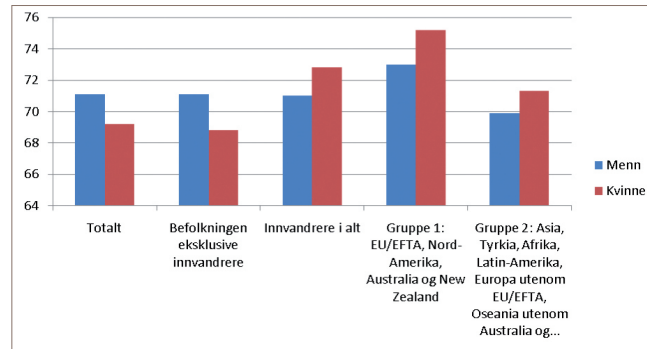


Sysselsetting i deltid, etter kjønn

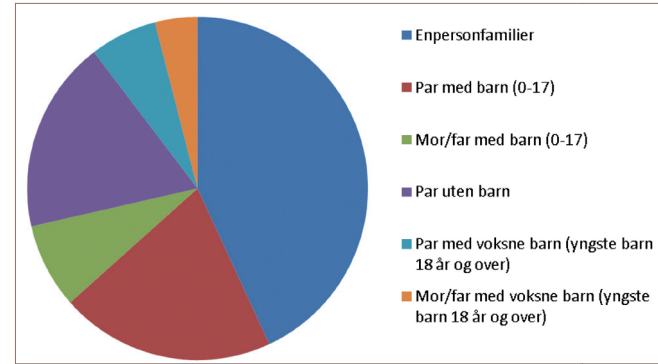


Sysselsatte i Finnmark inkludert innbyggere med innvandrerbakgrunn

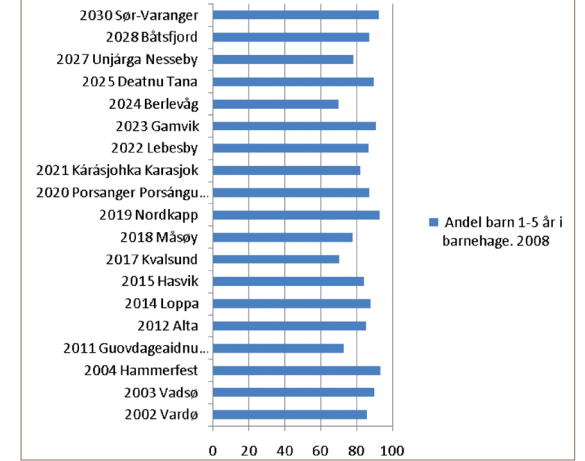
Sysselsatte 15-74 år, etter region, landbakgrunn, tid, statistikkvariabel og kjønn. Prosent



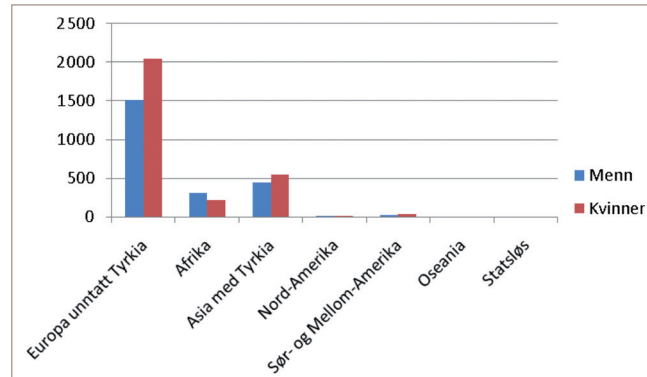
Familietyper, etter antall familier



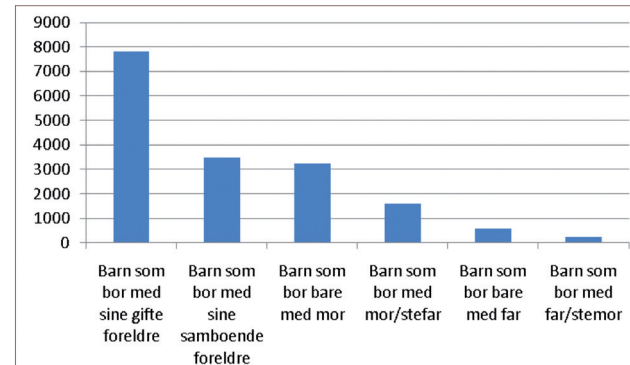
Andel barn 1-5 år i barnehage. 2008



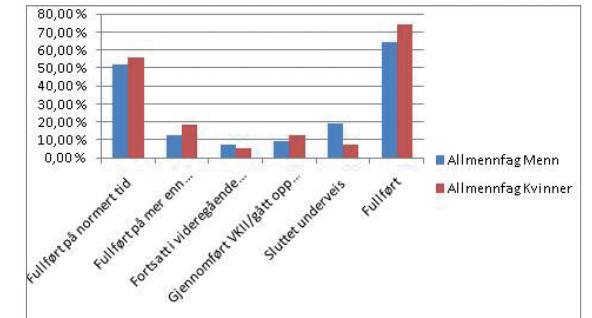
Figur: Innvandreres landsbakgrunn, etter kjønn



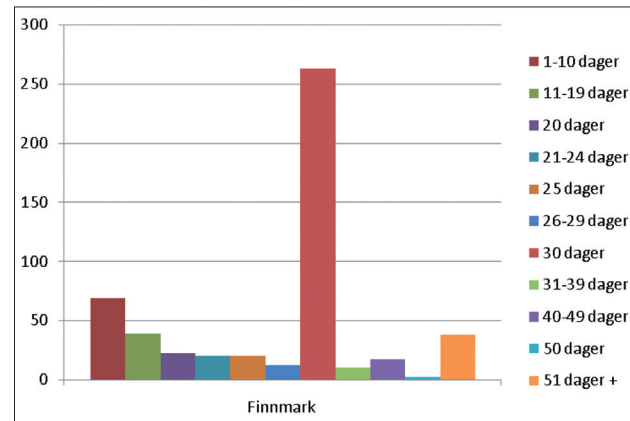
Familietyper, etter barns bosted



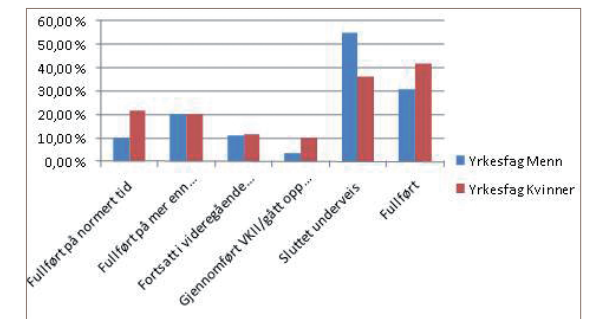
Frafall videregående skole - allmenfag



Uttak av pappapermisjon, antall fedre som tar hvor mange dager permisjon. 2008



Frafall videregående skole - yrkesfag



N - 8286 Nordfold, Norway
tel +47 75 77 90 50 fax + 47 75 77 79 70
post@kun.nl.no www.kun.nl.no



FINNMARK FYLKESKOMMUNE
FINNMÁRKKU FYLKKAGIELDA
Fylkeshuset, 9815 Vadsø
Henry Karlsens plass 1. 9800 Vadsø
tlf + 47 78 96 20 00 fax + 47 78 96 23 70
postmottak@ffk.no